



2024 annual report to the Community

Owen Primary School

Owen Primary School number: 325

Partnership: Lower Mid North



School principal:

Ashley Gardner

Date of endorsement:

06/02/2025



Government
of South Australia
Department for Education

Context Statement

Owen Primary School caters for students from R-6. At the time of this report, the enrolment in 2024 is 37. Owen Primary School is classified as Category 5 on the Department for Education Index of Educational Disadvantage. At the time of this report, the school population includes , 14% students with disabilities. Further information about the school is available on the school's website (including its context statement), as well as the My School website.

Data Source: Department for Education data holdings from Mid census captured in AUGUST 2024.

Governing Council Report

The Governing Council are pleased to have played their part in another successful year at Owen Primary School. 2024 could be defined as the year of The Resilience Project, increased parent engagement, the return of some great pre-covid traditions, strong financial governance and, most importantly, a great feeling when you walk in the front gate and see how the staff and kids interact with each other.

If good culture is the foundation stone that Owen thrives on, the adoption of The Resilience Project has seemingly added an extra dimension to this. If you don't understand what it is, I implore you to ask one of the kids about it – they're so good at articulating what they have learned about being happier, more empathetic, more resilient people. The Resilience Project, it is a series of evidence-based programs that build resilience and happiness and has been so popular that it is widely adopted throughout Australia in schools, businesses and elite sporting codes such as the AFL, NRL, Cricket Australia and many more.

The council starts each year revising our strategic plan and then we use it as our compass throughout the year to make sure we are adding value to the school. Some highlights of the year relating to the keys areas of this strategic plan include:

- The teaching staff continue to impress the council when updating us with the innovative ways they're keeping Owen at the cutting edge of teaching methods. The council believe our children are getting a great education and it continues to show in the metrics. We thank them for their time, energy and passion for their craft.
- Parents have had more opportunity than ever to be part of their child's learning. Ashley and the team must be commended for the number of open-classroom, information nights, activity days and more. Parent involvement at school assemblies is also good to see. At the end of term 3 assembly, there were as many parents, friends and relatives as there were students which I think is a healthy sign of how invested parents are in Owen.
- I also really like the way the school caters for the many and varied ways parents like to communicate. It has traditionally been a tricky balancing act, but the use of apps like Class Dojo has made it better than ever for parents to be engaged with their child's school day. Regular photos and messages of class activities, sports and excursions have been a great help in bringing parent engagement to their child's learning and to the school at large.
- We have seen some old traditions of inter-school swimming and sports day carnivals that, provide so much value to kids, return after a long break from Covid. Reviving these traditions has required an enormous amount of effort and so I applaud Ashley and the team. I know they are determined to keep the momentum with other schools so these traditions remain.
- Another highlight has been going to events like sports day, Easter breakfast and the swimming carnival and seeing a strong Parents and Friends group volunteering their time. The camaraderie forged between parents over 'flipping a snag' or standing on a cake stall contributes massively to the whole school culture that the Council is aiming to grow.

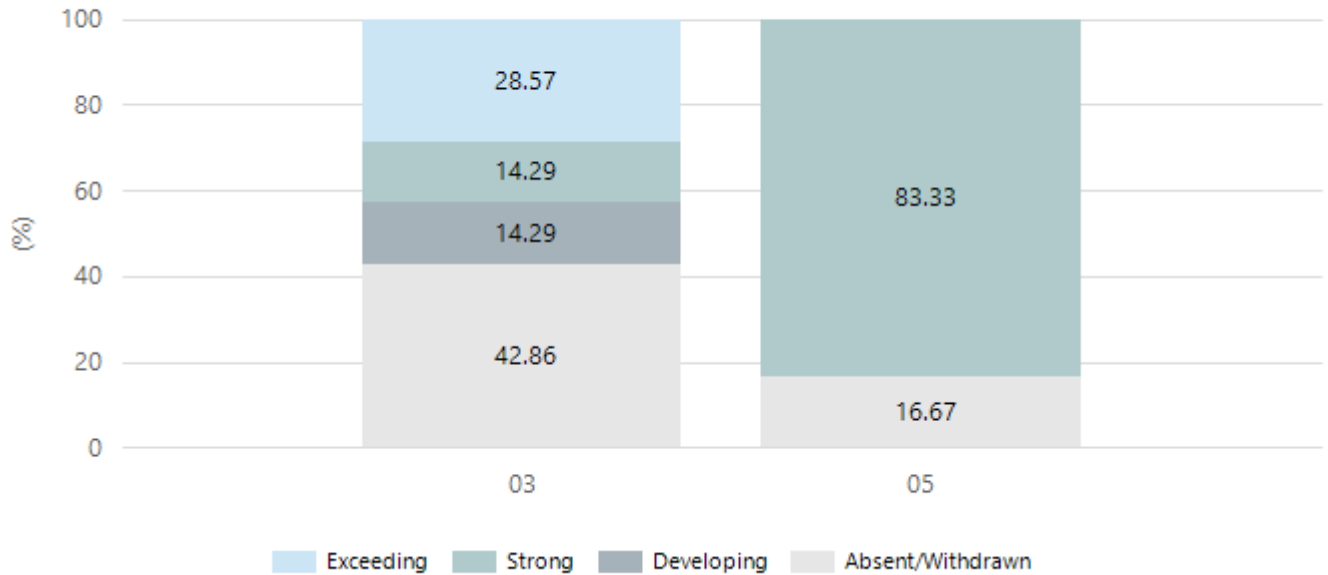
Congratulations to all the year 6 graduates, especially Tom Warnes, the school captain, the SRC and all of year 6 for setting such a great example to the other students. They have set a high standard that will have a ripple effect for years to come.

Performance Summary

NAPLAN Proficiency

In 2023 the Australian Curriculum, Assessment and Reporting Authority (ACARA) - a Commonwealth Independent statutory authority - announced changes to NAPLAN performance reporting. The new approach replaces the previous numerical NAPLAN bands and the national minimum standard.

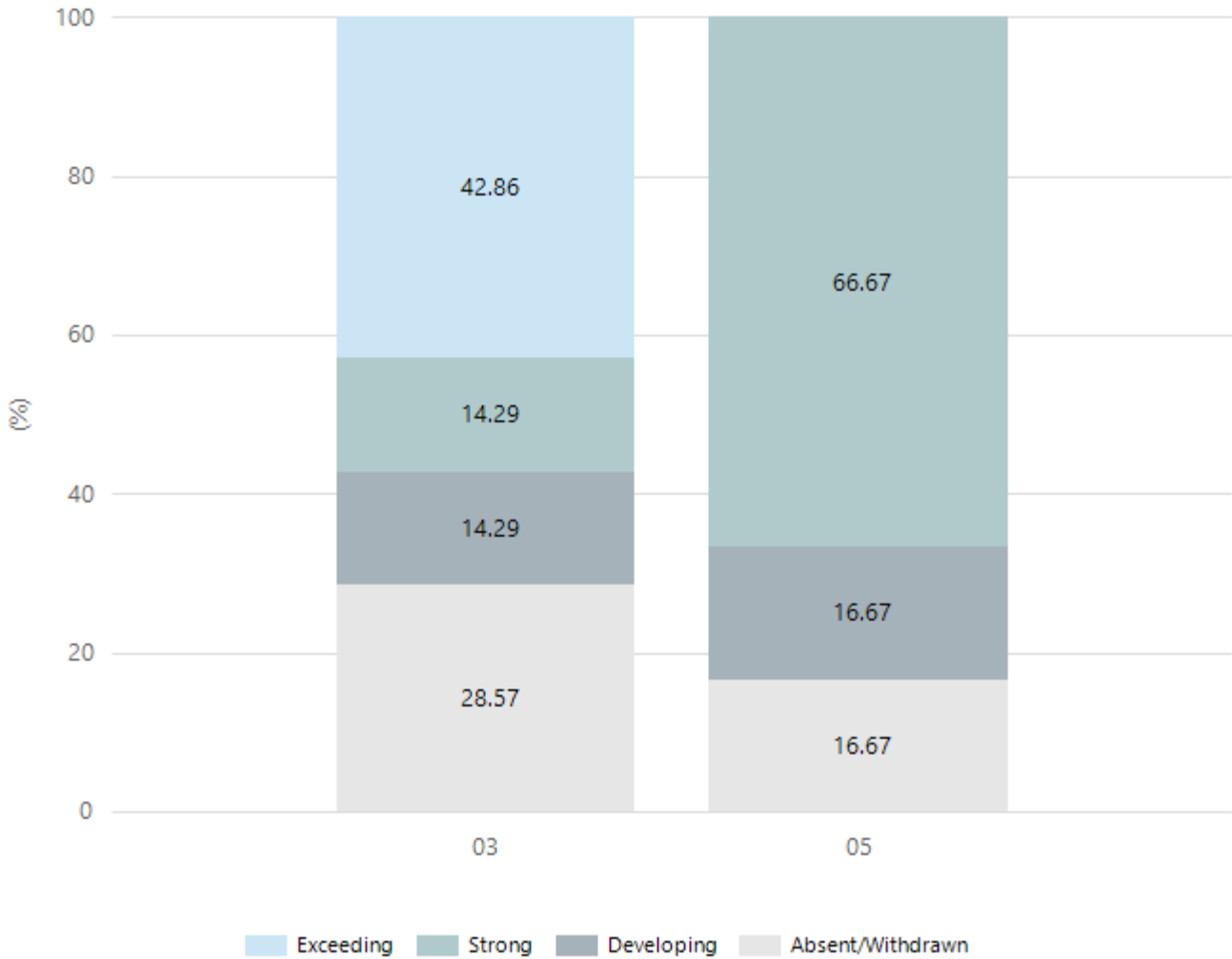
Numeracy



Year Level	03	05
Exceeding	2	
Strong	1	5
Developing	1	
Absent/Withdrawn	3	1
Total	7	6

Data Source: Department for Education Assessment Data Holdings, 2024. If there are less than 6 students who sat NAPLAN in a school, no information will be shown. If a year level has less than 6 students, that year level will not be shown in NAPLAN results.

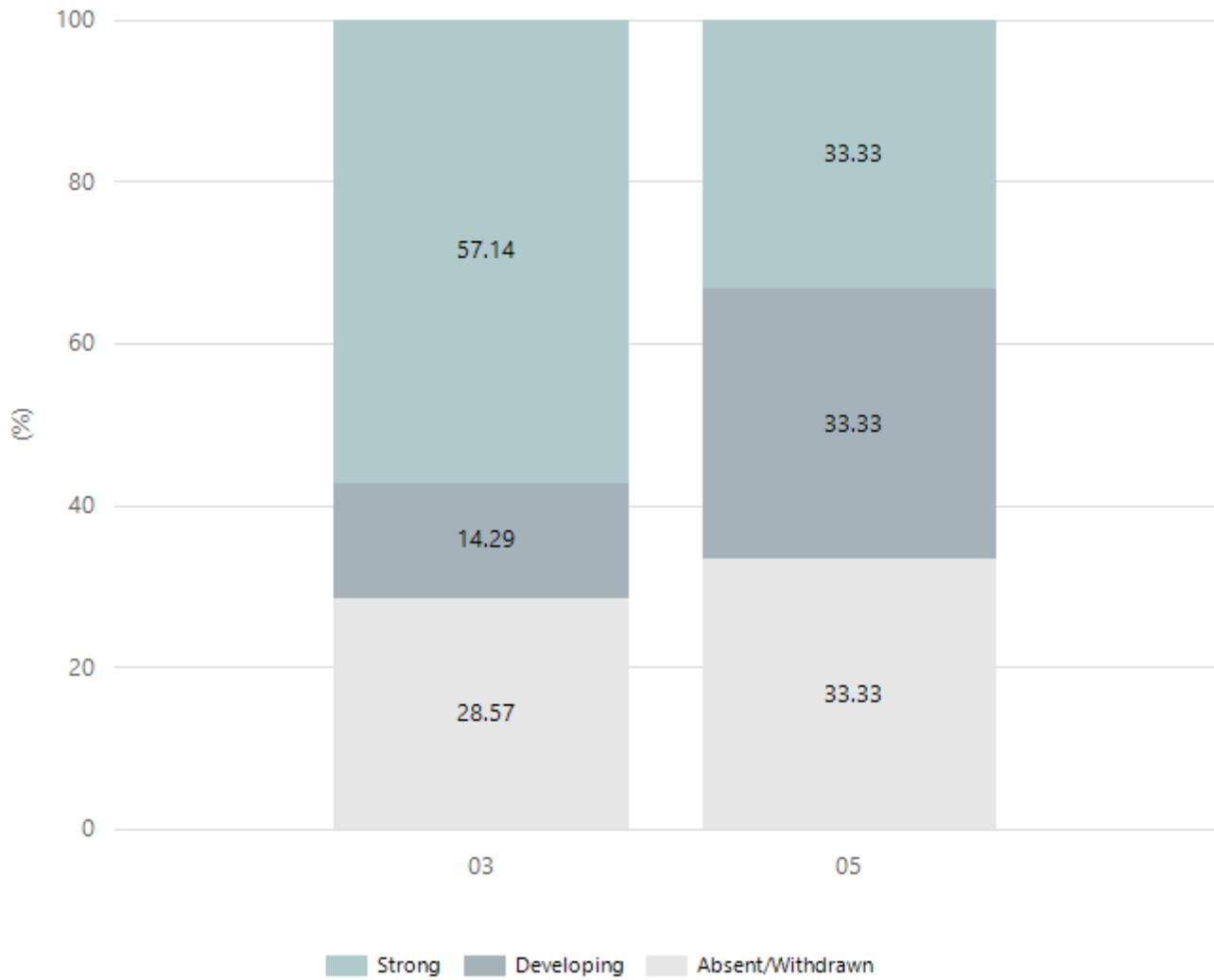
Reading



Year Level	03	05
Exceeding	3	
Strong	1	4
Developing	1	1
Absent/Withdrawn	2	1
Total	7	6

Data Source: Department for Education Assessment Data Holdings, 2024. If there are less than 6 students who sat NAPLAN in a school, no information will be shown. If a year level has less than 6 students, that year level will not be shown in NAPLAN results.

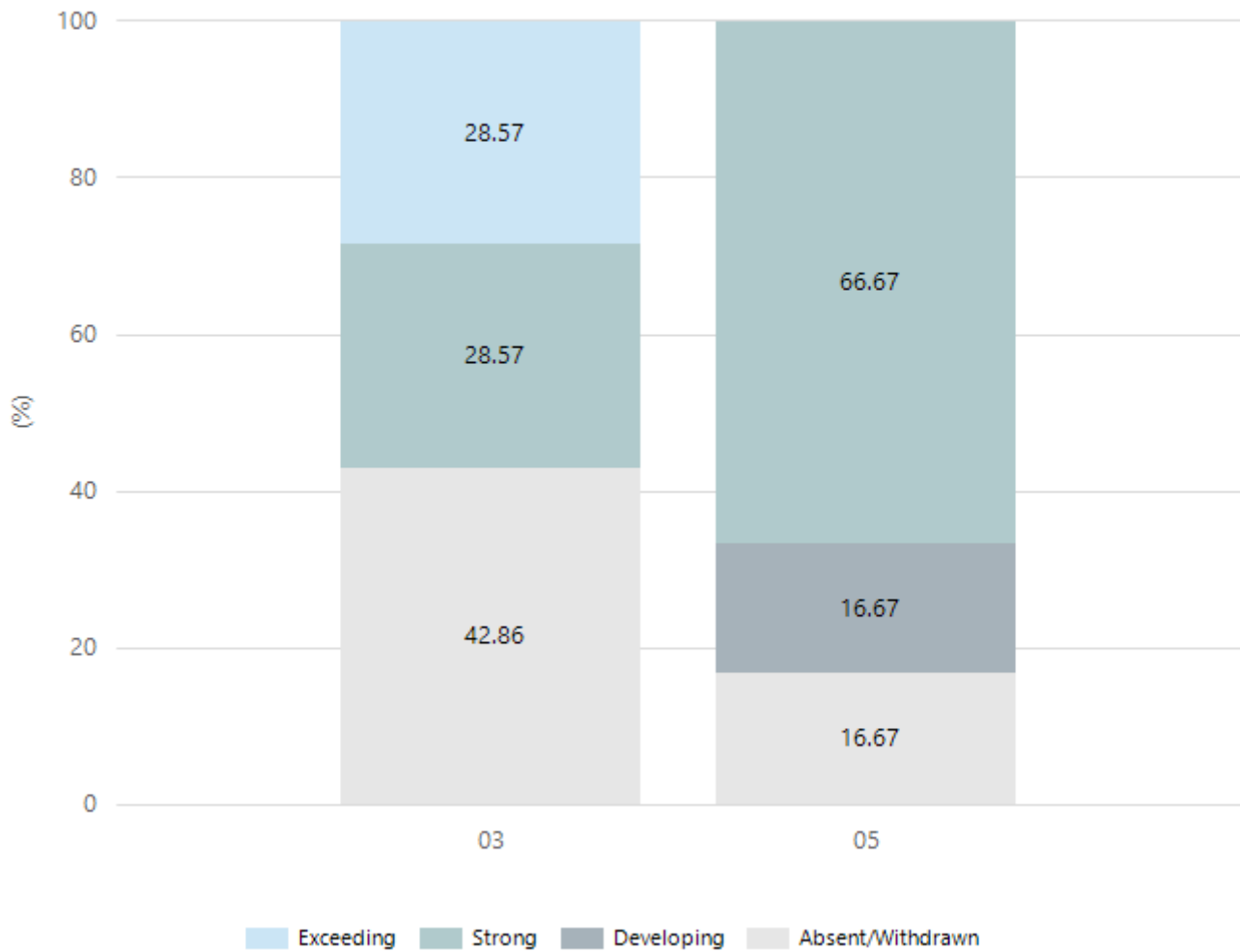
Writing



Year Level	03	05
Strong	4	2
Developing	1	2
Absent/Withdrawn	2	2
Total	7	6

Data Source: Department for Education Assessment Data Holdings, 2024. If there are less than 6 students who sat NAPLAN in a school, no information will be shown. If a year level has less than 6 students, that year level will not be shown in NAPLAN results.

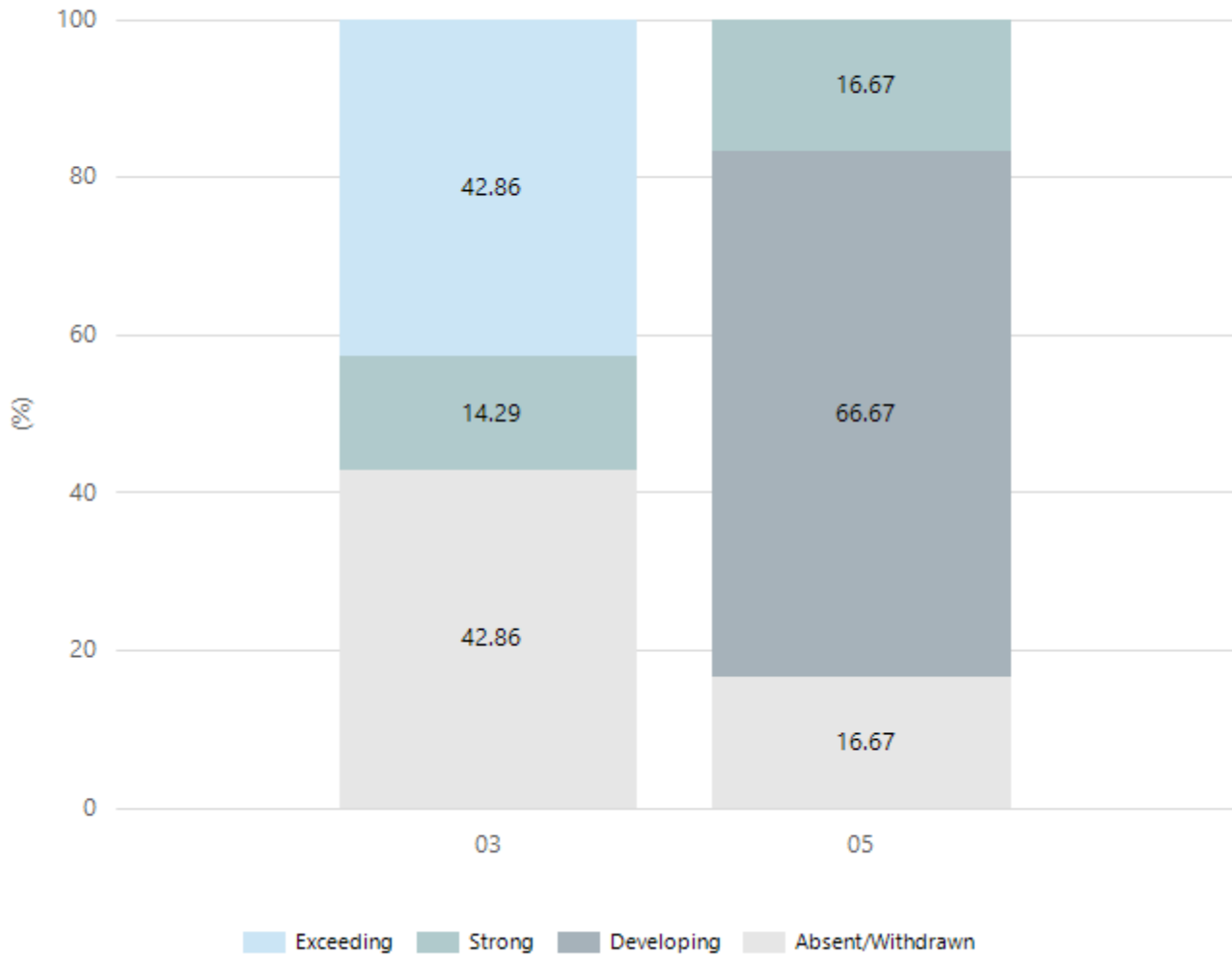
Grammar



Year Level	03	05
Exceeding	2	
Strong	2	4
Developing		1
Absent/Withdrawn	3	1
Total	7	6

Data Source: Department for Education Assessment Data Holdings, 2024. If there are less than 6 students who sat NAPLAN in a school, no information will be shown. If a year level has less than 6 students, that year level will not be shown in NAPLAN results.

Spelling



Year Level	03	05
Exceeding	3	
Strong	1	1
Developing		4
Absent/Withdrawn	3	1
Total	7	6

Data Source: Department for Education Assessment Data Holdings, 2024. If there are less than 6 students who sat NAPLAN in a school, no information will be shown. If a year level has less than 6 students, that year level will not be shown in NAPLAN results.

School Attendance

Year Level	2022	2023	2024
Reception	78.8%	77.5%	63.3%
Year 01	73.8%	83.9%	84.4%
Year 02	70.6%	83.1%	73.3%
Year 03	80.7%	83.3%	76.8%
Year 04	68.3%	74.0%	72.0%
Year 05	92.4%	84.4%	88.3%
Year 06	87.7%	94.2%	63.9%
Total	79.6%	82.2%	75.5%

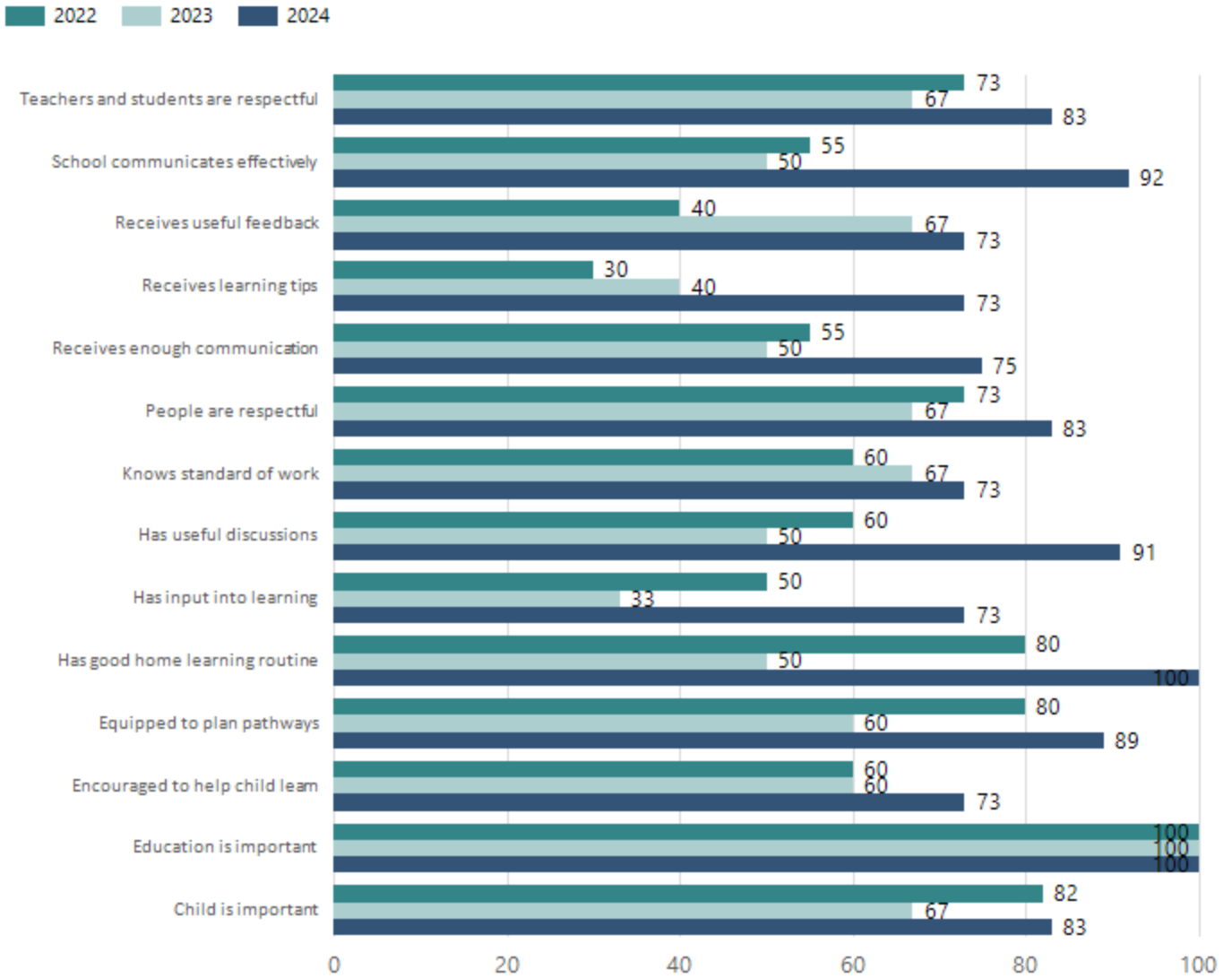
Data Source: Department for Education Attendance Data, Semester 1 Report 2024. A blank cell indicates there were no students enrolled. 'Primary Other' includes students enrolled in specialised education options. 'Secondary Other' includes students who have already spent a year at Year 12 and elected to undertake further study at Year 12.

Attendance Comment

In South Australia, all children and young people must be in school from 6 years to 16 years old. They must attend a government or non-government school full time. From age 16 to 17 however, young people must attend school or an approved learning program (such as an apprenticeship, traineeship, accredited course or university). Schools and parents must encourage and support students to come to school every day. Parents and caregivers must make sure their child is enrolled in a school, and attends school all day and everyday it is open, unless a child is sick or has an approved exemption. Teachers and leaders actively follow up when a student misses school, including recording all absences and non-attendance. All schools in South Australia have local attendance procedures governed under the Education and Children's Services Regulations 2020.

School Parent Opinion Survey Results

Proportion of agree/strongly agree response(%)



Data Source: 2024 Department for Education Parent Opinions Survey, Term 3 2024.

Intended Destination

Leave Reason	Number	%
IS - INTERSTATE	1	13.0%
U - UNKNOWN	5	63.0%
VI - LEFT SA FOR VIC	2	25.0%

Data Source: Department for Education Destination Data Report, 2024. Data extract term 3 2024. Data shows recorded destinations for students that left the school in the previous year. Data is uploaded by schools in term 3 and may not reflect final or total figures at time of report creation.

Highest Qualifications held by the teaching workforce and workforce composition

All teachers at this school are qualified and registered with the SA Teachers Registration Board.

Qualification Level	Number of Qualifications
Bachelor's degrees or Diplomas	5

Data Source: Data extracted from Mandatory Workforce Information Collections as on the last pay date of June 2024. As self-reported by staff in the system.

Please note: Data includes staff who are Actively employed and on extended paid leave. Please note only the highest qualification of the Teaching staff is reported. Excludes any number of other certifications earned.

Workforce composition including indigenous staff

	Teaching Staff		Non-Teaching Staff	
	Indigenous	Non-Indigenous	Indigenous	Non-Indigenous
Full-Time Equivalents	0.0	4.2	0.0	3.4
Persons	0.0	5.0	0.0	7.0

Data Source: Data extracted from Mandatory Workforce Information Collection as on the last pay date of June 2024.

Please note: Data includes staff who are actively employed and on extended paid leave. "Indigenous category" is self-reported by staff in the system.

Financial Statement

Funding Source	Amount
Grants: State	\$928,238.44
Grants: Commonwealth	\$1,950.00
Parent Contributions	\$9,254.00
Fund Raising	\$3,778.62
Other	\$5,654.29

Data Source: School supplied data.