



Owen Primary School

Fourth Street, Owen, S.A. 5460
Principal: Liam Whitwell
Phone: 85286116 Fax: 85286004
email: liam.whitwell62@schools.sa.edu.au

Mobile: 0408 571957

Behavior Management policy

At Owen Primary School we expect everyone to interact in a respectful and responsible manner to create a safe, orderly and productive learning community.

We believe that students need to practise positive behaviours and have the opportunity to change inappropriate behaviours.

We support and encourage children to make appropriate behaviour choices through positive reinforcement and also ensure teachers utilise teachable moments in discussing children's behaviour with them.

Each learning environment has a consistent set of acceptable and unacceptable behaviours and appropriate consequences, however the wording of these is negotiated with the students and re-visited regularly.

Scope

Consequences for low level behaviour within learning environments are determined by the teacher and re-visited regularly and may include

- Reminders,
- Time out within the classroom,
- Making up time during play periods or activities,
- Working in another location within the class.

Consequences for significant or repeated inappropriate behaviour within learning environments may include;

- Removal from class for a period of time, to a buddy class,
- EXIT to the front office,
- Parents notified,
- Meetings with parents/ carers,
- Take home,
- Internal suspension,
- Suspension,
- Exclusion.

Mobile Phones

No student is permitted to use or personally carry a mobile phone at any time during the normal school day. Parents/Caregivers who need to contact their child should contact the school – 85286116
Students are discouraged from bringing mobile phones to school, but if a student requires the use of a mobile phone before or after school, it must remain in their bag or in the front office.
The camera function on a mobile phone must not be used at any time as this breaches Privacy laws.

Consequences for the use of a mobile phone at school may include;

- Immediate removal of the phone.
- Parent contact

Consequences for the use of a phone during school time to share/play any material will result in:

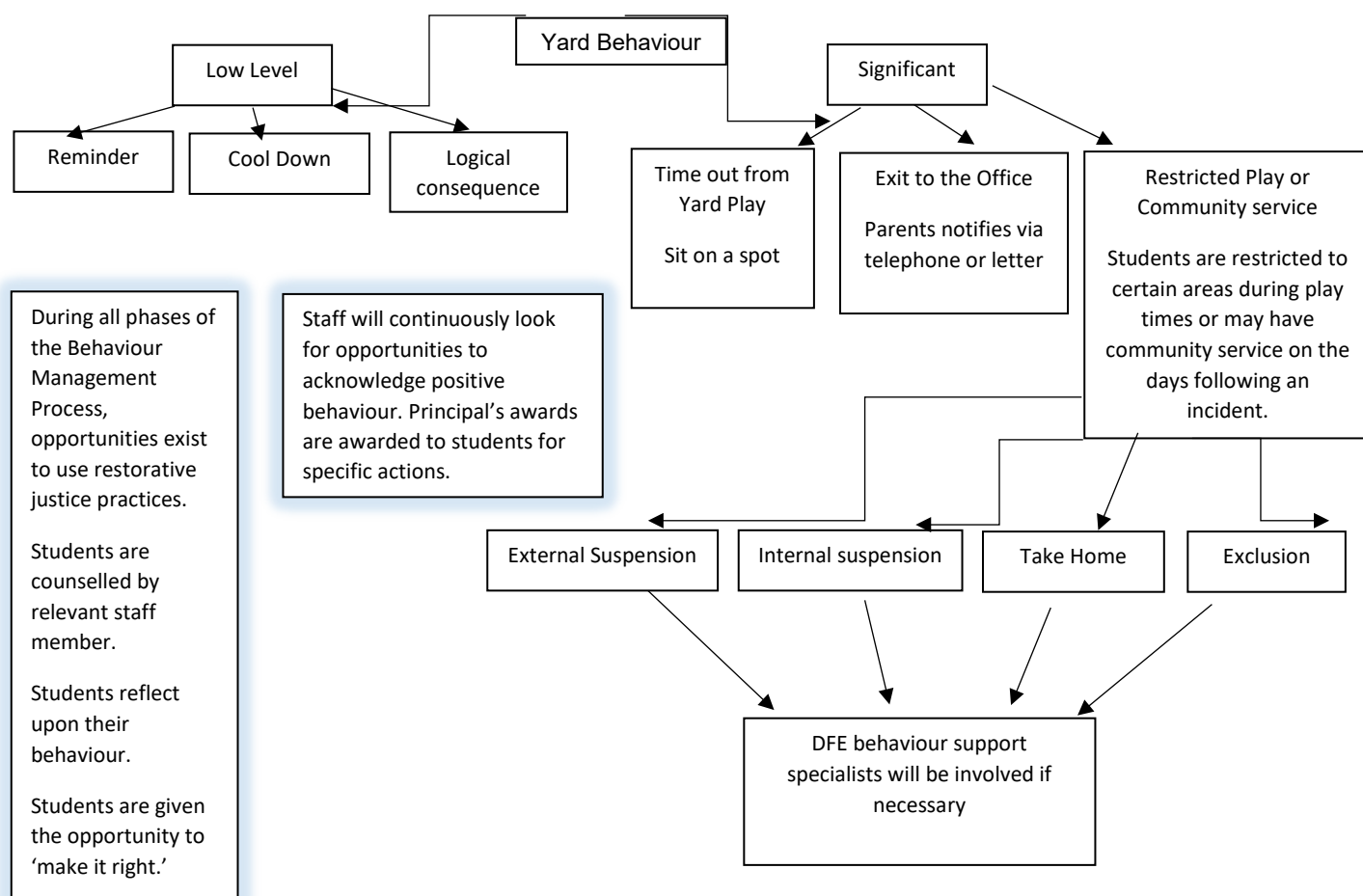
- Exit
- Removal of a privilege
- Non-attendance of a special school activity – SAPSASA, School Excursion etc

Exits

If a child is exited to the front office, parents will be notified. If a child is exited for a third time during a term, they will miss a school special event that may include excursions or incursions.

Yard Behaviour

We support students to change their behaviour using the following processes in response to inappropriate behaviour.



Low Level Behaviour Incidents

Low level behaviour includes, but is not limited to;

- One off incidents of inappropriate language,
- Disrupting other people's play in a non-violent manner,
- Littering,
- Being out of bounds.

Significant Behaviour Incidents

Significant behaviour includes, but is not limited to;

- Bullying or harassment (see separate policy)
- Violence. Please note that violence in any form is not tolerated at Owen Primary School and is not an appropriate reaction at any time.
- Threats
- Illegal substances or activities (Police and parents will be immediately notified)
- Deliberate refusal to follow a reasonable instruction.
- Repeated inappropriate behaviours
- Deliberate dangerous play

